



# Our Fields, Our SDGs

2025 Expo Regional Office  
HYOGO Prefectural Government  
[banpakusuishin@pref.hyogo.lg.jp](mailto:banpakusuishin@pref.hyogo.lg.jp)

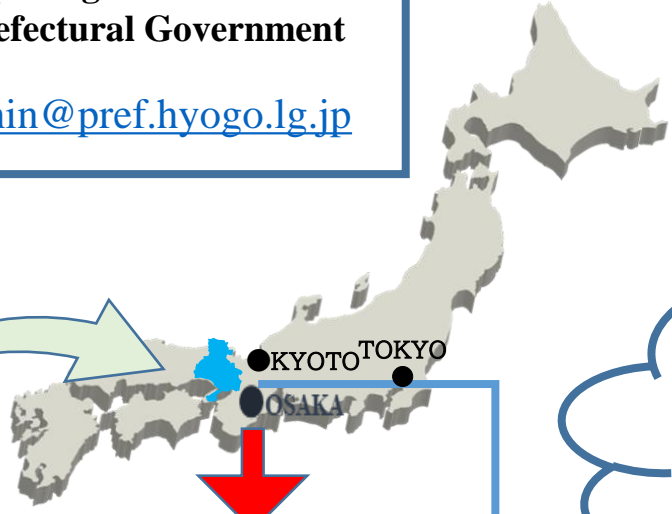
The origin of Japan  
① historical roots  
② No.1 contents  
③ every elements  
④ Base for traveling

## SDGs Experience-Based Regional Programs

185 Programs  
9 Premium Programs

## SDGs Future City

qualified by Cabinet Office in Japan on 2023.5



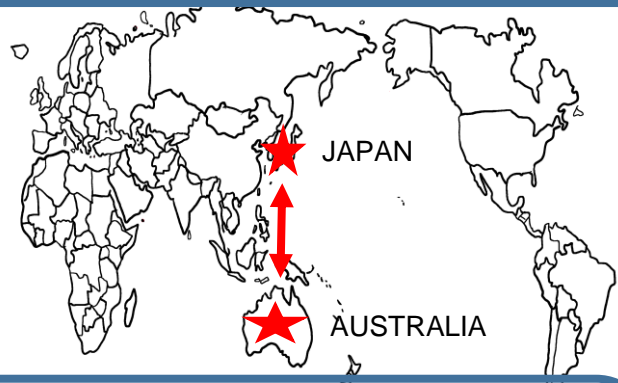
EXPO 2025  
2025.04.13-10.13  
AM9:00-PM10:00  
Yumeshima, Osaka  
1h from Hyogo

What is Hyogo Field Pavilion?  
We regard Hyogo's daily activities, such as farming, local industry, environmental conservation activities and more as a "pavilion."

# Hyogo Field Pavilion

~A trip where you can feel the SDGs of Hyogo~

Prefectural capital: Kobe  
Population: Approx. 5.38 million (about the same QSL)  
Area: Approx. 8,396 km<sup>2</sup> (about the same Melbourne)  
Sister State relationship with Western Australia on June 23, 1981



Learn and taste Kobe Beef



Explore the Himeji Castle town by e-bike

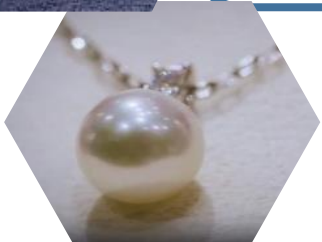


Famous for  
\* Kobe Beef  
\* Pearl Bridge  
\* Himeji Castle  
\* Japanese Sake  
\* Pearl



Learn about its history and the method of construction

Our aim is  
To attract foreigners to the Japan Expo 2025 and to let them know the charm of Hyogo, which will lead to regional development.



Learn about the pearl and experience the accessory making



Visit breweries and taste sake

Access to Hyogo  
→ SYDNEY (SYD) → 10h → TOKYO (HND)  
→ 70 min → KOBE (UKB or ITM)  
→ PERTH (PER) → 10h → TOKYO (NRT)  
→ 90 min → OSAKA (KIX) → 60 min → KOBE (bus or train)



Please check these for more information on Hyogo !

What we want to do through EXPO 2025 is

1. to **discover** and **certificate** the program
2. to **refine** the program
3. to **promote** for domestically and internationally